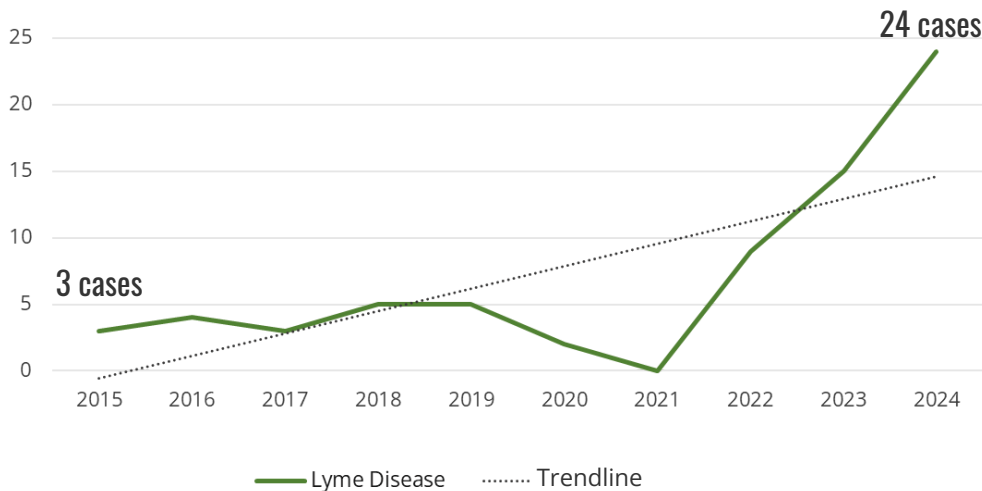


Lyme Disease Cases

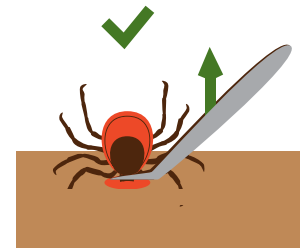
2015 - 2024, Medina County



Lyme disease cases are increasing in Medina County and Ohio overall. There was an 8-fold increase in Lyme disease cases from 2015 to 2024 in Medina County.

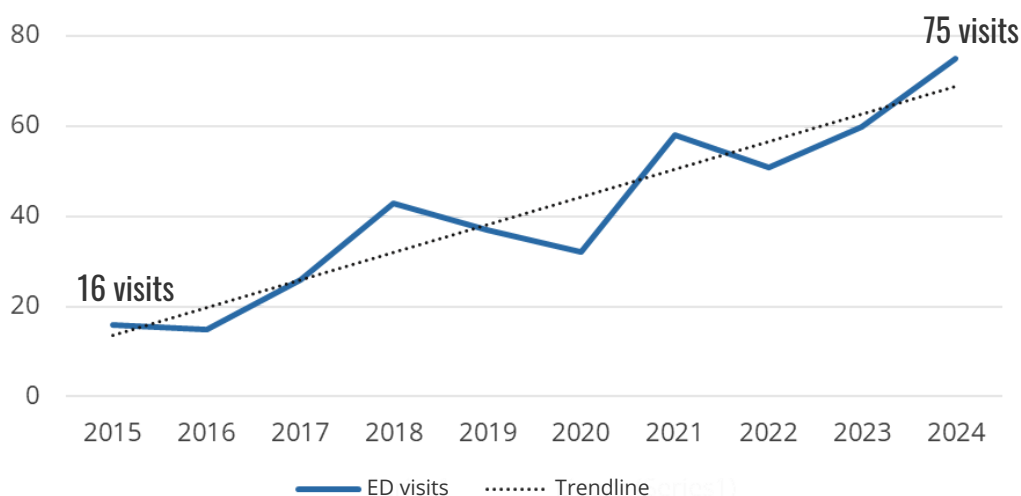
Fast Fact:

There are several reportable infectious diseases that can be transmitted by ticks. Lyme disease is transmitted by the blacklegged (deer) tick. Remove attached ticks properly and as soon as possible with guidance from the [Tick Bite Assessment Tool](#) on our website.



Emergency Department Visits for Tick Bites

2015 - 2024, Medina County



Since 2015, tick bite-related emergency department (ED) visits among Medina County residents have increased 4.7-fold. This includes only EDs that report to the database EpiCenter and does not include every tick bite-related ED visit but allows public health to recognize trends.

Fast Fact:

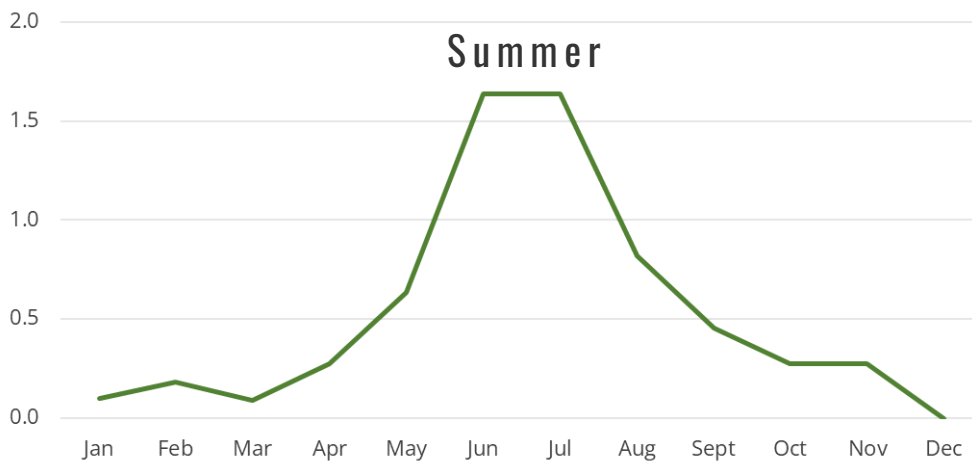
Tickborne disease symptoms may include fever, fatigue, and muscle aches. Lyme disease may cause joint pain and a rash. Use the [Tick Bite Assessment Tool](#) to determine if it is appropriate to seek physician care regarding a tick bite.



What time of year do Lyme disease cases occur?

Reported Lyme Disease Cases by Month

2015-2024 Average, Medina County



Reported Lyme disease cases most often occur in the summer months of May, June, July, and August. However, tick bites and tick-related diseases can happen all year long.

Fast Fact:

Ticks live in leaf litter, grassy, wooded or brushy areas. Use an EPA registered tick repellent when outdoors.



Check out the [Medina County Health Department Tick Page!](#)



Fast Fact:

Persons diagnosed with Lyme disease do not always know they were bitten by a tick. Ticks can be very small which is why it is important to take the proper precautions to prevent ticks from attaching such as showering and tumble drying clothes on high heat after being outdoors.

RESOURCES & DATA SOURCES

WANT THE FULL PICTURE? GO BEYOND THIS SNAPSHOT.



Resources

If you have symptoms of Lyme disease, contact your primary care provider or make an appointment at the Medina County Health Department Health Center by calling 330-723-9688. Most ticks can be properly removed at home, use the Tick Bite Assessment Tool on the Medina County Health Department website: <https://medinahealth.org/home/ticks/>

Ohio Department of Health Tick Information: <https://odh.ohio.gov/know-our-programs/zoonotic-disease-program/diseases/tickborne-diseases>

Centers for Disease Control and Prevention Tick Information: <https://www.cdc.gov/ticks/>

Check the most up-to-date data on reportable infectious diseases in Ohio: <https://data.ohio.gov/wps/portal/gov/data/view/summary-of-infectious-diseases-in-ohio>

Data Sources

Ohio Disease Reporting System (ODRS). ODRS was used to calculate the number of Lyme disease cases and the month when those cases occurred among Medina County residents. A "case" is counted if it is considered probable or confirmed at the time of this report (7/3/2025). Data is subject to change as more information is obtained.

EpiCenter by Health Monitoring. EpiCenter was used to calculate the number of ED visits per year for tick bites among Medina County residents.