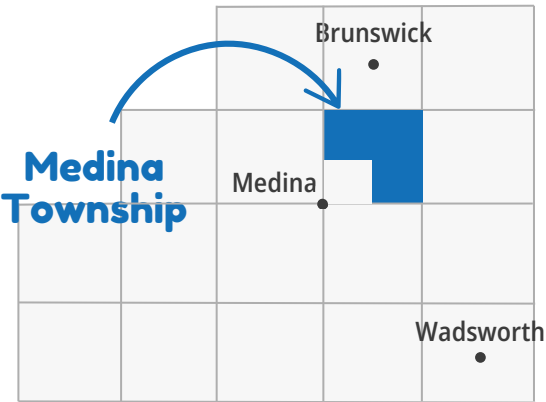


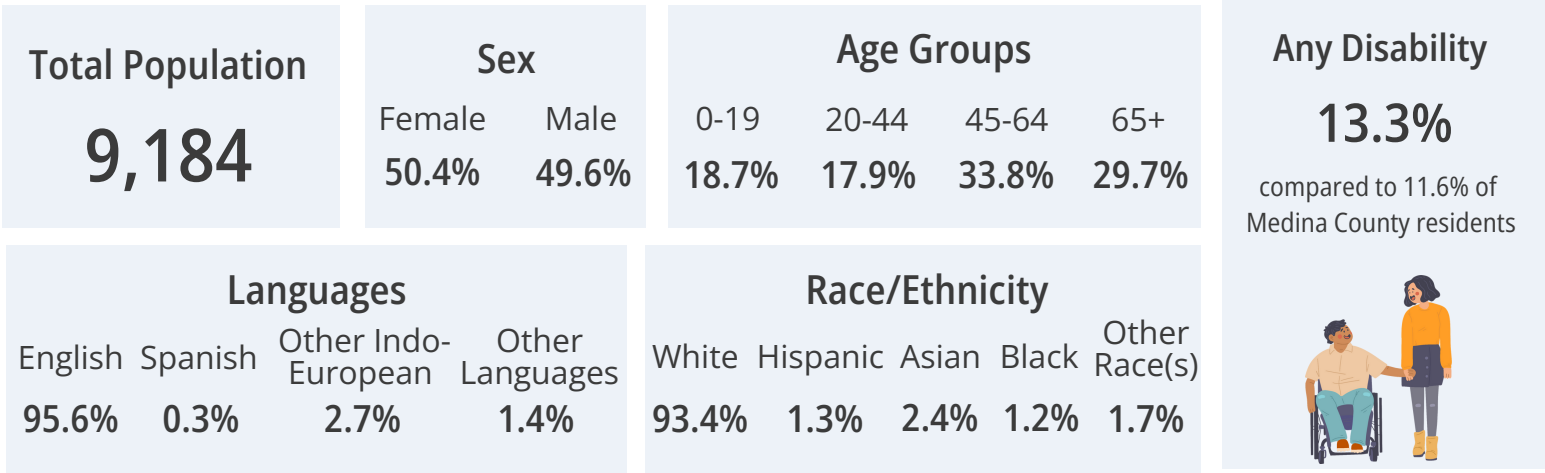
# Medina Township

## Community Profile

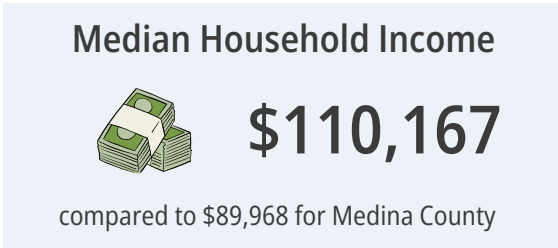
Medina Township (unincorporated)



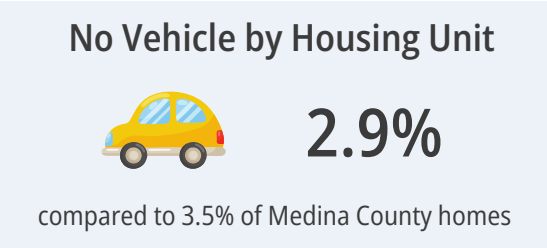
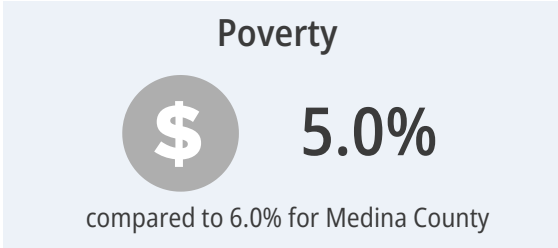
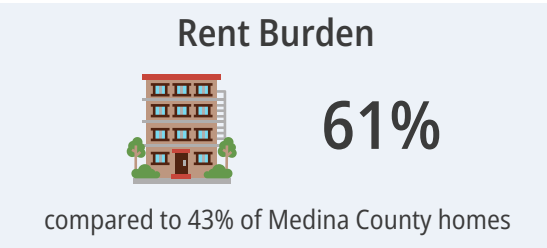
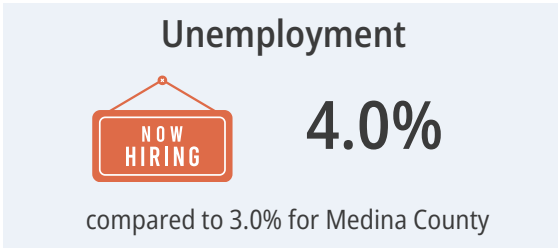
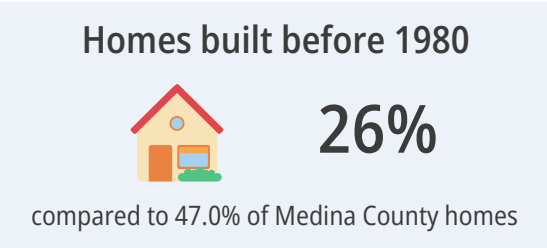
### Demographics



### Economics



### Housing



# Health Indicators in Medina Township

## Preventive Services

Women 65+ Up-to-Date on  
Preventive Services

**42%**

compared to 39% of  
Medina County residents

Men 65+ Up-to-Date on  
Preventive Services

**51%**

compared to 49% of  
Medina County residents

Adult Dentist Visits

**73%**



compared to 67% of  
Medina County residents

## Healthcare Coverage

No Health  
Insurance Coverage

**2.5%**



compared to 3.7% of  
Medina County residents

Health Insurance Coverage

**97.5%**

compared to 96.3% of Medina County residents

Private Insurance

**83.2%**

compared to 79.9% of  
Medina County residents

Public Coverage

**33.5%**

compared to 29.2% of  
Medina County residents

## Adult Self-Rated Health Status

Overall Fair  
or Poor Health

**14%**

compared to 12% of  
Medina County residents



## Life Expectancy

Life Expectancy

**80.5  
years**

compared to 79.5 years for  
Medina County residents

Mental Health not Good  
for 14+ days

**15%**

compared to 16% of  
Medina County residents

Physical Health not Good  
for 14+ days

**11%**

compared to 10% of  
Medina County residents

# Healthy Living in Medina Township

## Adult Risk Behaviors

Binge Drinking

19%

compared to 19% of  
Medina County residents

Current Smoking

14%

compared to 16% of  
Medina County residents



Sleeping less than 7 hours

33%

compared to 33% of  
Medina County residents



No Leisure-time  
Physical Activity

20%

compared to 23% of  
Medina County residents

## Top 5 Adult Health Events

Obesity

35%

compared to 38% of  
Medina County residents

High Blood Pressure

34%

compared to 28% of  
Medina County residents



High Cholesterol

35%

compared to 28% of  
Medina County residents

Arthritis

32%

compared to 25% of  
Medina County residents



Depression

23%

compared to 24% of  
Medina County residents

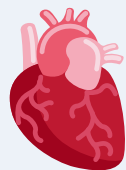


# Top 5 Causes of Death in Medina Township

## Diseases of the Heart

281

per 100,000



compared to 211 per 100,000  
Medina County residents

## Cancer

257

per 100,000



compared to 197 per 100,000  
Medina County residents

## Alzheimer's Disease

104

per 100,000



compared to 44 per 100,000  
Medina County residents

## Dementia

76

per 100,000

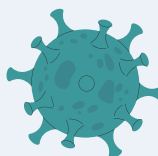


compared to 46 per 100,000  
Medina County residents

## COVID-19

76

per 100,000



compared to 59 per 100,000  
Medina County residents

## Top Cause of Unintentional Injury



**Falls**

## Top Cause of Cancer



**Lung**

## Medina County Health Department

[www.medinahealth.org](http://www.medinahealth.org)

330-723-9688

For data sources and methods please visit our website at  
[www.medinahealth.org/datareports](http://www.medinahealth.org/datareports). Report last revised 1/31/2025.

*Services are partially funded by your local health levy.  
This institution is an equal opportunity provider.*

