

### Summary

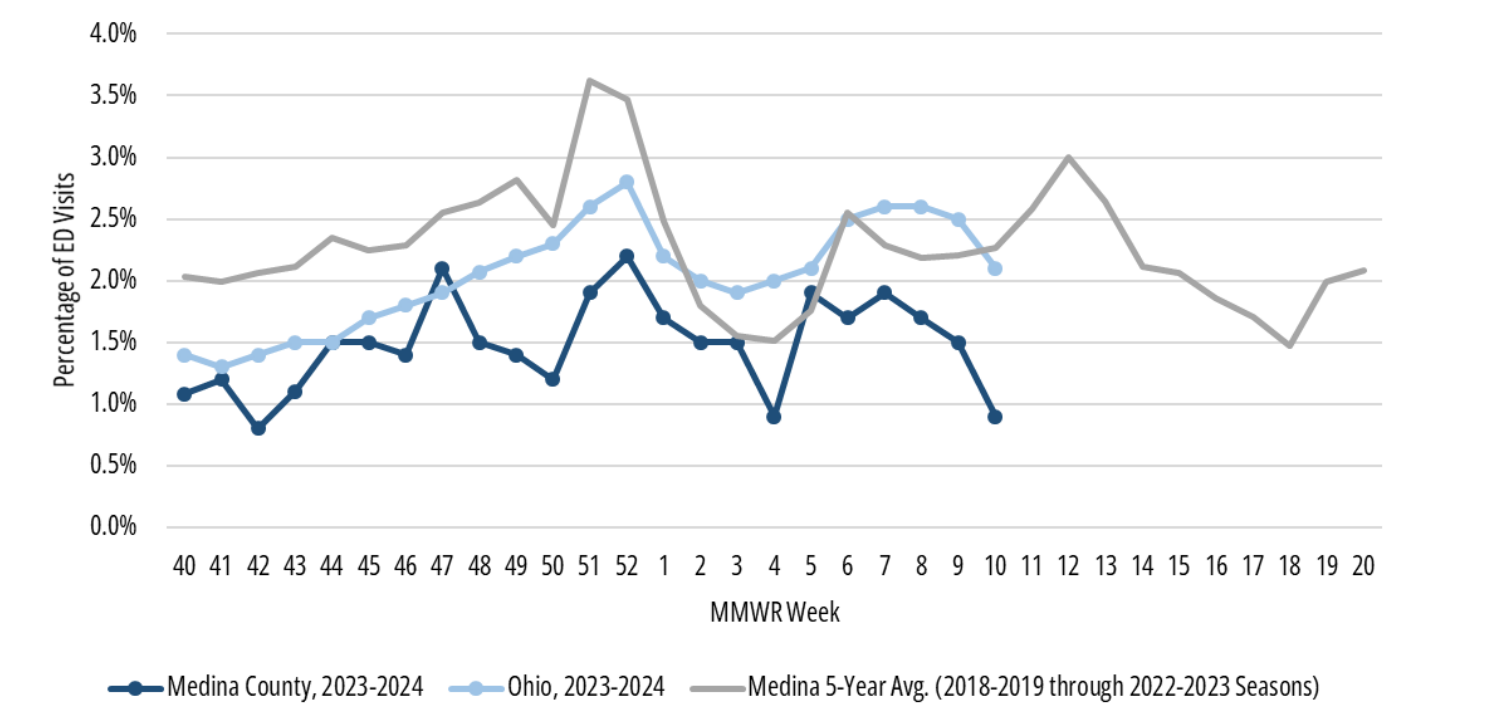
This report contains a summary of influenza activity and influenza cases reported to the Medina County Health Department during MMWR Week 10 (3/3/2024 - 3/9/2024). The percentage of emergency department (ED) visits for Influenza-like-illness (ILI) symptoms and fever is lower than the historical average (Figure 1). There were 10 hospitalizations reported in Medina County which is higher than the historical average (Figure 2). Zip code 44215 had the highest percentage of ED visits (Figure 3). During the current influenza season, the age group 5 - 24 years has the highest percentage of ED visits and the age group 65+ years has the highest percentage of hospitalizations (Figure 4). There were a total of 1,536 reported over-the-counter (OTC) medication and thermometer sales in MMWR Week 10 (Figure 5).

### Medina County Dashboard

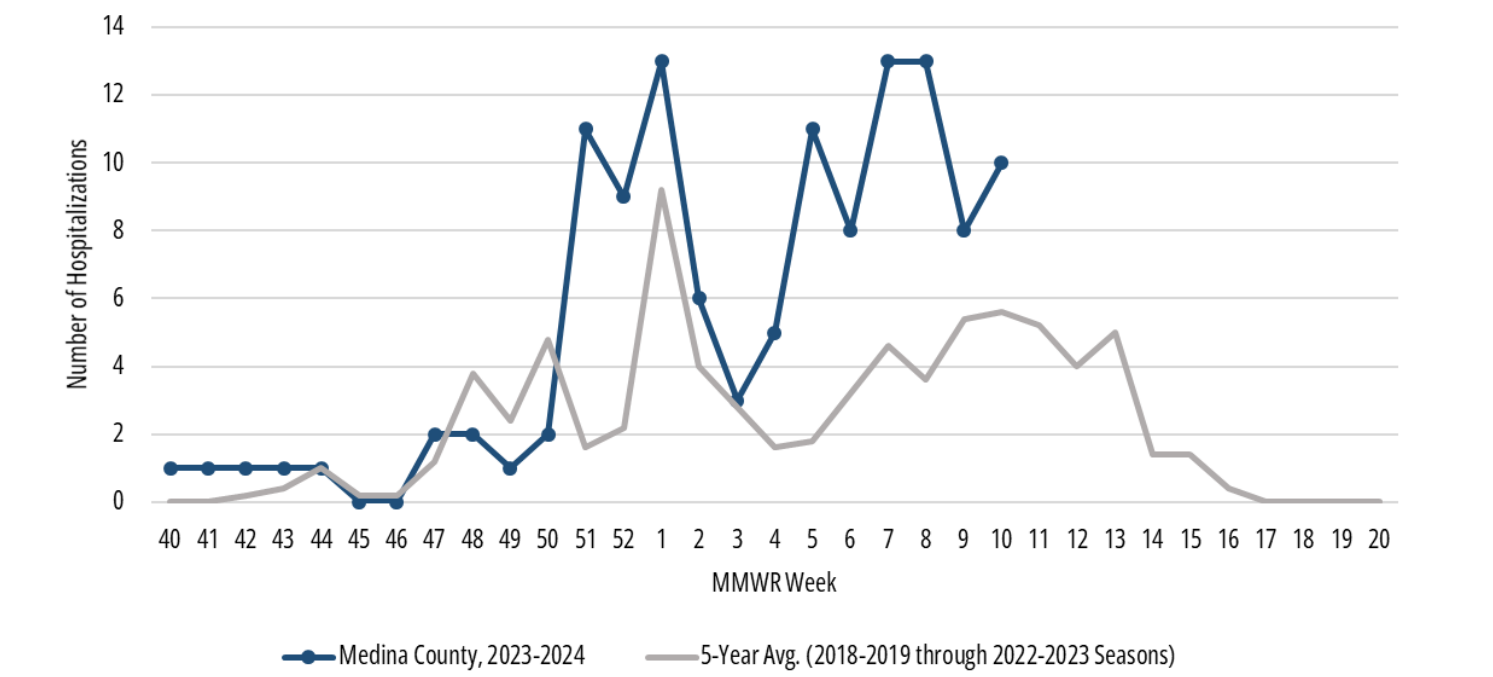
Indicator	Current Week	Previous Week	Trend (# of weeks)	Season to Date
Number of Fever + ILI ED Visits <sup>1</sup>	12	18	↓ 3	404
Percentage of Fever + ILI ED Visits <sup>1</sup>	0.9%	1.5%	↓ 3	-
Number of Influenza Hospitalizations <sup>2</sup>	10	8	↑ 1	122
Number of Novel Influenza Infections <sup>2</sup>	0	0	— 23	0
Number of Over-the-Counter Medication and Thermometer Sales <sup>3</sup>	1,536	1,411	↑ 1	35,283
Number of Influenza Deaths <sup>4</sup>	0	0	— 2	2
Number of Pneumonia Deaths <sup>4</sup>	0	0	— 1	9

*\*Over-the-counter (OTC) medication sales do not reflect all OTC medication sales within the county. Please see Figure 5 for specific medications that are being tracked and monitored. All numbers are preliminary and subject to change.*

**Figure 1. Percentage of ED Visits with Influenza-like-Illness Symptoms and Fever among Medina County and Ohio Residents by MMWR Week, 2023-2024 Influenza Season and Historic 5-Year Average**

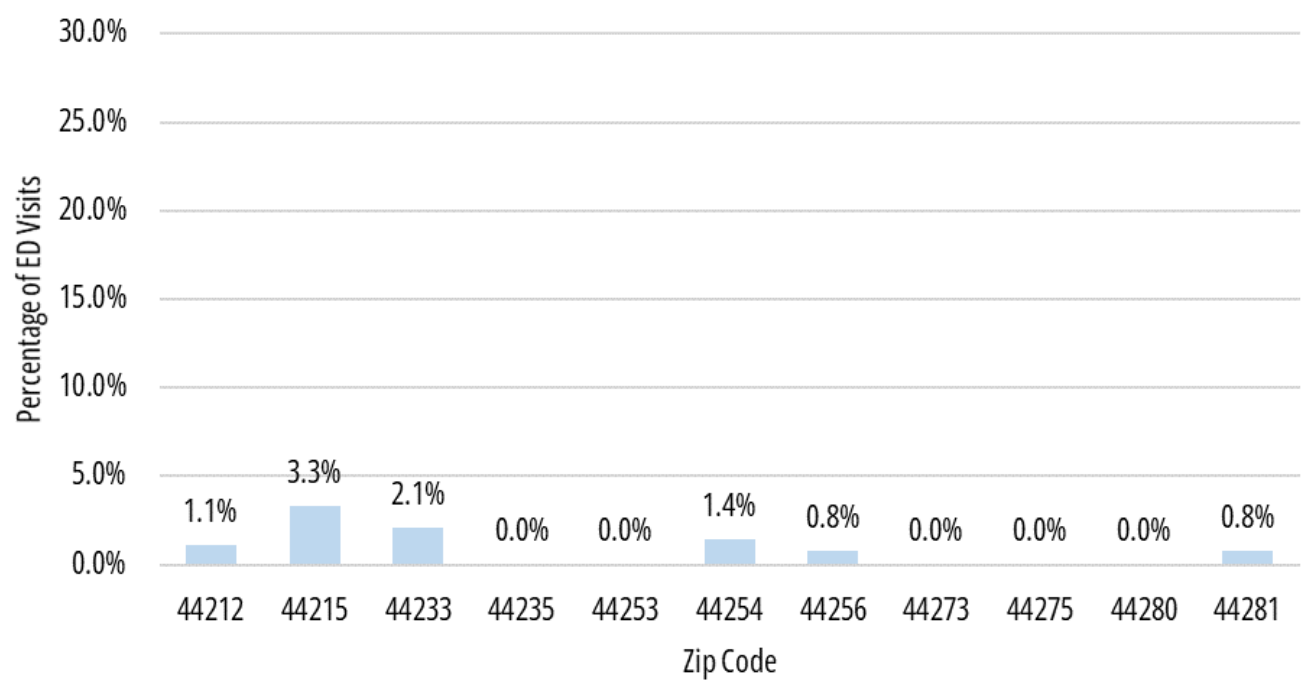


**Figure 2. Number of Reported Influenza-Associated Hospitalizations among Medina County Residents by MMWR Week, 2023-2024 Influenza Season and Historic 5-Year Average**

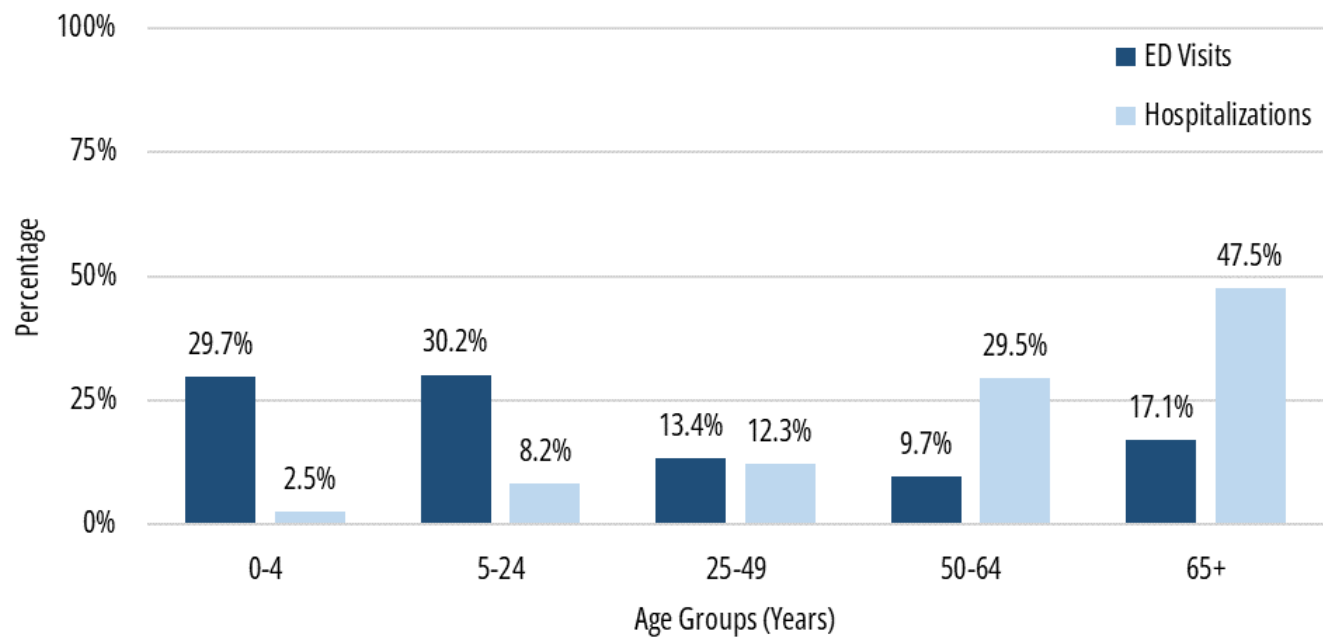


*\*Historic 5-year averages should be interpreted with caution as the COVID-19 pandemic disrupted seasonal influenza trends.*

**Figure 3. Percentage of ED Visits with Influenza-like-Illness Symptoms and Fever among Medina County Residents by Zip Code MMWR Week 10, 2023-2024 Influenza Season**

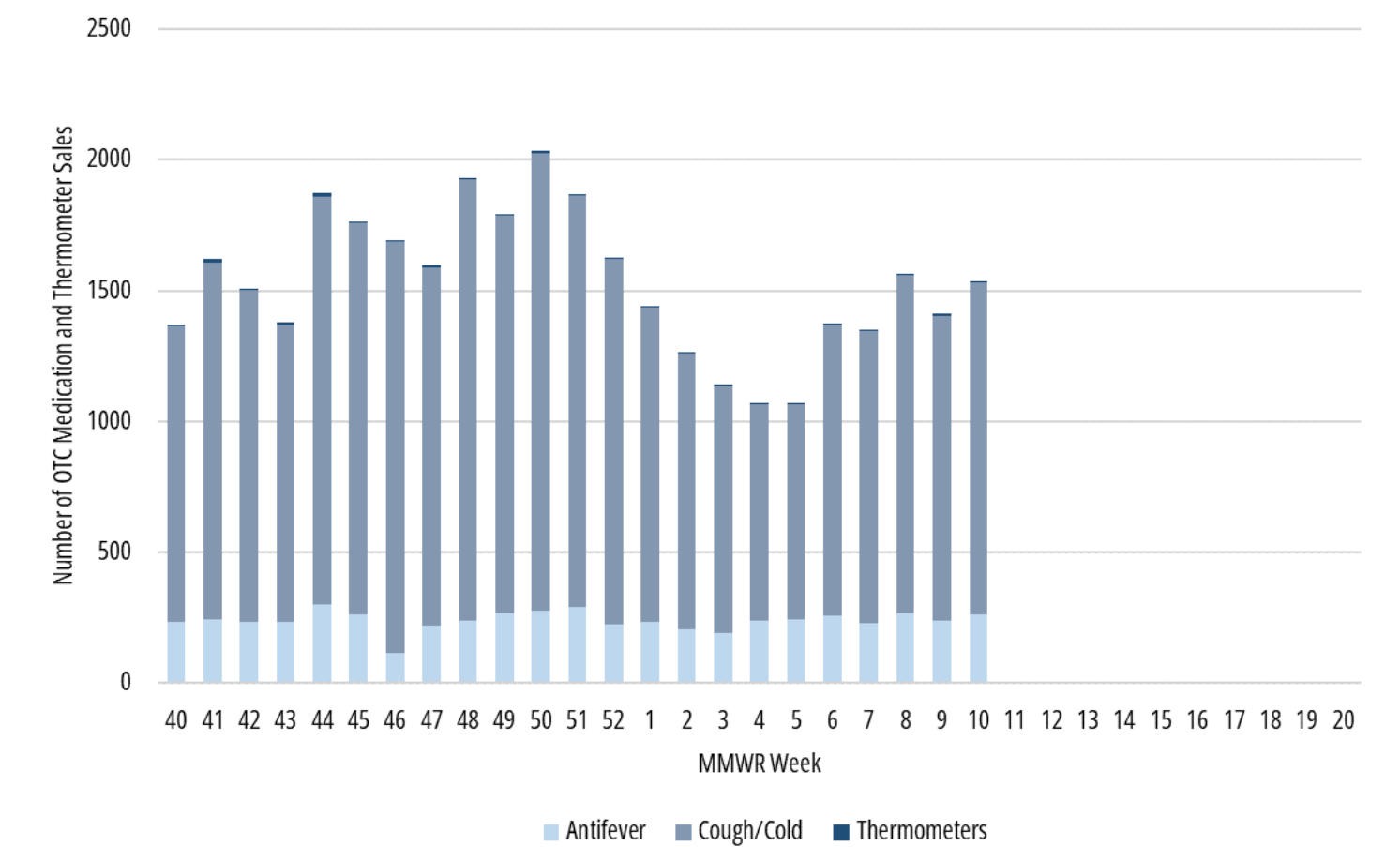


**Figure 4. Age Distribution of Influenza Related ED Visits and Hospitalizations among Medina County Residents, 2023-2024 Influenza Season**



1 - EpiCenter. Health Monitoring.  
2 - Ohio Disease Reporting System (ODRS). Ohio Department of Health.

Figure 5. Number of Over the Counter Medication and Thermometer Sales in Medina County Drug Stores, 2023-2024 Influenza Season



## Regional, State, and National Surveillance Data

### East Central Ohio Regional Surveillance Data

- East Central Ohio incidence of confirmed **influenza-associated hospitalizations** for MMWR Week 10 in 2023-2024 season = 85.
  - East Central Ohio region includes Ashland, Carroll, Columbiana, Holmes, Mahoning, Medina, Portage, Richland, Stark, Summit, Trumbull, Tuscarawas, and Wayne counties.

### Ohio Surveillance Data

- Ohio incidence of confirmed **influenza-associated hospitalizations** for MMWR Week 10 in the 2023-2024 season = 720.
- 3 **influenza-associated pediatric mortalities** have been reported in Ohio so far during the 2023-2024 influenza season (through 3/9/2024).

3 - National Retail Data Monitor. RODS Laboratory at the University of Pittsburgh.

6 - Ohio Department of Health. Ohio Seasonal Influenza Activity Report.

# National Surveillance Data

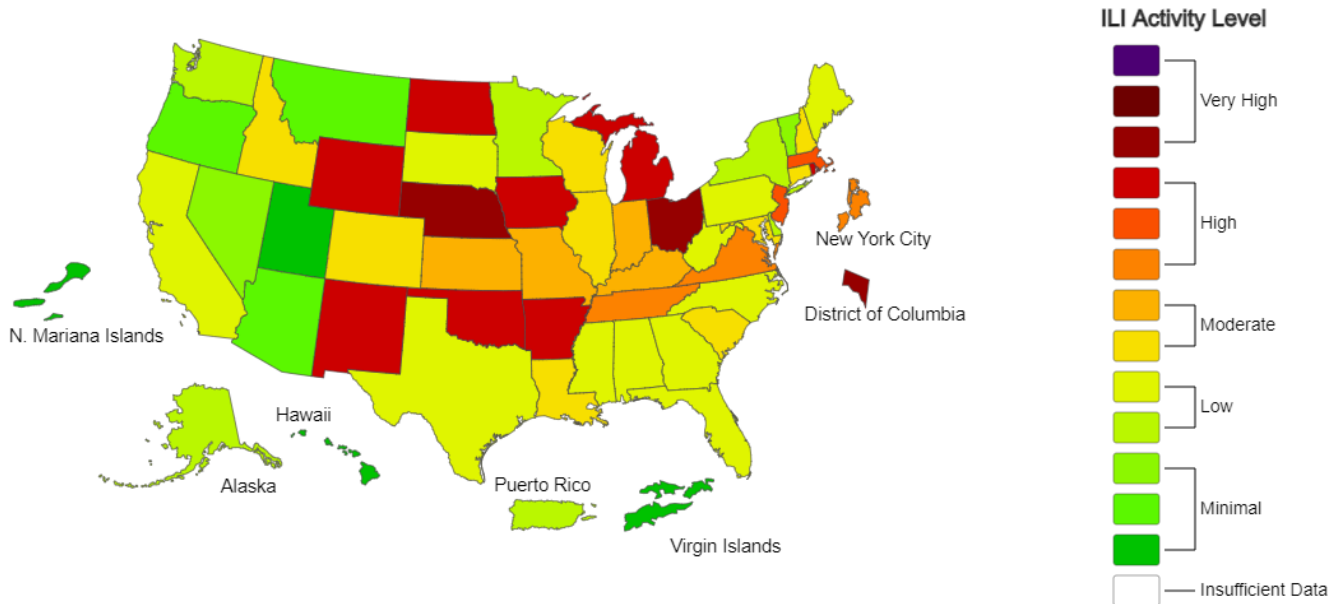


## A Weekly Influenza Surveillance Report Prepared by the Influenza Division

### Outpatient Respiratory Illness Activity Map Determined by Data Reported to ILINet

This system monitors visits for respiratory illness that includes fever plus a cough or sore throat, also referred to as ILI, not laboratory confirmed influenza and may capture patient visits due to other respiratory pathogens that cause similar symptoms.

2023-24 Influenza Season Week 10 ending Mar 09, 2024



\*This map uses the proportion of outpatient visits to healthcare providers for influenza-like illness to measure the ILI activity level within a state. It does not, however, measure the extent of geographic spread of flu within a state. Therefore, outbreaks occurring in a single city could cause the state to display high activity levels.

\*Data collected in ILINet may disproportionately represent certain populations within a state, and therefore may not accurately depict the full picture of influenza activity for the whole state.

\*Data displayed in this map are based on data collected in ILINet, whereas the State and Territorial flu activity map are based on reports from state and territorial epidemiologists. The data presented in this map is preliminary and may change as more data is received.

\*Differences in the data presented by CDC and state health departments likely represent differing levels of data completeness with data presented by the state likely being the more complete.

\*For the data download you can use Activity Level for the number and Activity Level Label for the text description.

\*This graphic notice means that you are leaving an HHS Web site.

For more information, please see CDC's Exit Notification and Disclaimer policy.

For more information on the methodology, please visit Outpatient Illness Surveillance methods section.

## Data Sources

1 - EpiCenter. EpiCenter collects, stores, and analyzes de-identified registration data from hospitals and other healthcare facilities in near-real time. EpiCenter is operated by Health Monitoring.

2 - Ohio Disease Reporting System (ODRS). These data were provided by the Ohio Department of Health. The Department specifically disclaims responsibility for any analyses, interpretations or conclusions. Reported influenza-associated hospitalizations totaled by date reported to local health department.

3 - National Retail Data Monitor (NRDM). NRDM collects over-the-counter medication sales data. Medication sales in this report are from Medina County. NRDM is operated by the RODS Laboratory at the University of Pittsburgh. <https://www.rods.pitt.edu/rods/>.

4 - Ohio Department of Health Bureau of Vital Statistics. Mortality File. Data from 2023 is considered preliminary and subject to change as more information is added. These data were provided by the Ohio Department of Health. The Department specifically disclaims responsibility for any analyses, interpretations or conclusions.

5 - FluView Interactive. FluView Interactive combines data from two of the Centers for Disease Control and Infection's influenza surveillance systems, the WHO/NREVSS Collaborating Labs and the US Outpatient Influenza-like Illness Surveillance Network. <https://www.cdc.gov/flu/weekly/fluviewinteractive.htm>

6 - Ohio Department of Health. Ohio Seasonal Influenza Activity Report. <https://odh.ohio.gov/know-our-programs/seasonal-influenza/ohio-flu-activity>

---

Questions about this report can be directed to the Medina County Health Department Epidemiologist, by calling 330-723-9688 option 2, or via email at [tplackowski@medinahealth.org](mailto:tplackowski@medinahealth.org).

*Services are partially supported by your local health levy. This institution is an equal opportunity provider.*

